



**REGIONAL SPECIALISED METEOROLOGICAL CENTRE-TROPICAL CYCLONES, NEW DELHI
TROPICAL WEATHER OUTLOOK**

DEMS-RSMC TROPICAL CYCLONES NEW DELHI DATED 07.08.2020

(UPDATED) TROPICAL WEATHER OUTLOOK FOR NORTH INDIAN OCEAN (THE BAY OF BENGAL AND ARABIAN SEA) VALID FOR NEXT 120 HOURS ISSUED AT 1200 UTC OF 07.08.2020 BASED ON 0900 UTC OF 07.08.2020.

BAY OF BENGAL:

A LOW PRESSURE AREA IS LIKELY TO DEVELOP OVER NORTH & ADJOINING WESTCENTRAL BAY OF BENGAL (BOB) AROUND 9TH AUGUST, 2020.

SCATTERED LOW AND MEDIUM CLOUDS WITH EMBEDDED INTENSE TO VERY INTENSE CONVECTION LAY OVER NORTH & CENTRAL BOB AND ADJOINING SOUTHEAST BOB & ANDAMAN SEA. SCATTERED LOW AND MEDIUM CLOUDS WITH EMBEDDED MODERATE TO INTENSE CONVECTION LAY OVER SOUTHWEST BOB.

PROBABILITY OF CYCLOGENESIS (FORMATION OF DEPRESSION) DURING NEXT 120 HRS :

24 HOURS	24-48 HOURS	48-72 HOURS	72-96 HOURS	96-120 HOURS
NIL	NIL	NIL	NIL	NIL

ARABIAN SEA:

THE CYCLONIC CIRCULATION OVER KUTCH AND NEIGHBOURHOOD (NORTHWEST INDIA) HAS EMERGED INTO NORTHEAST ARABIAN SEA. UNDER IT'S INFLUENCE A LOW PRESSURE AREA HAS FORMED OVER NORTHEAST ARABIAN SEA AND ADJOINING COASTAL AREAS OF KUTCH (INDIA) AND SOUTH PAKISTAN AT 0900 UTC OF TODAY, THE 7TH AUGUST 2020. IT IS LIKELY TO BECOME MORE MARKED DURING NEXT 24 HOURS AND MOVE WESTWARDS.

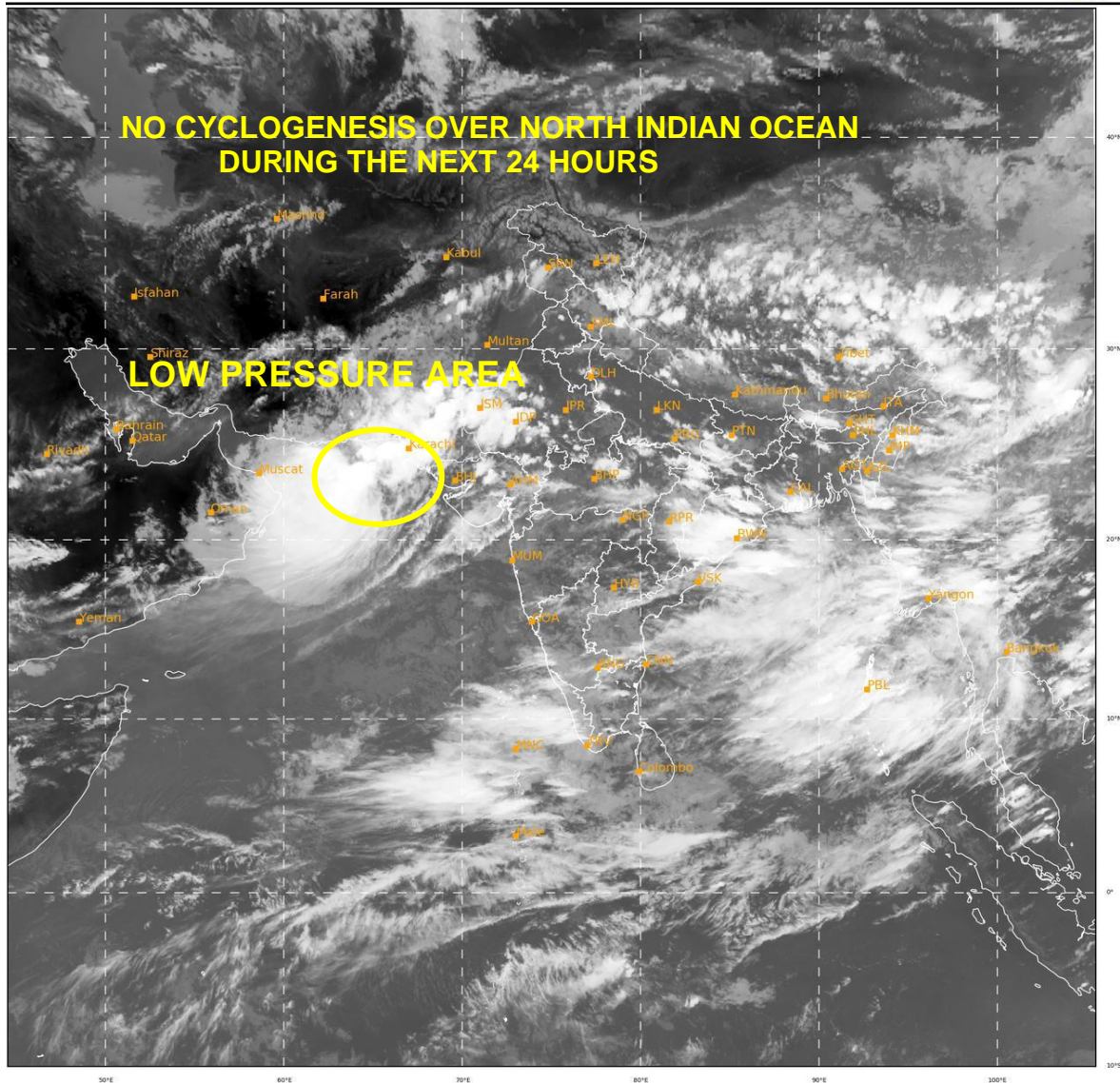
AS PER SATELLITE IMAGERY BASED ON 0900 UTC OF 7TH AUGUST, SCATTERED LOW AND MEDIUM CLOUDS WITH EMBEDDED INTENSE TO VERY INTENSE CONVECTION LAY OVER WEST GUJARAT ADJOINING NORTHEAST ARABIAN SEA & NEIGHBOURHOOD IN ASSOCIATION WITH THE CYCLONIC CIRCULATION OVER THE AREA. SCATTERED LOW AND MEDIUM CLOUDS WITH EMBEDDED MODERATE TO INTENSE CONVECTION LAY OVER NORTHEAST ARABIAN SEA AND GULF OF KUTCH. SCATTERED LOW AND MEDIUM CLOUDS WITH EMBEDDED INTENSE TO VERY INTENSE CONVECTION LAY OVER NORTHWEST ARABIAN SEA WITH MINIMUM CLOUD TOP TEMPERATURE AS -93 DEGREE CELSIUS.

PROBABILITY OF CYCLOGENESIS (FORMATION OF DEPRESSION) DURING NEXT 120 HRS :

24 HOURS	24-48 HOURS	48-72 HOURS	72-96 HOURS	96-120 HOURS
NIL	NIL	NIL	NIL	NIL

REMARKS: NIL

**PROBABILITY OF CYCLOGENESIS (FORMATION OF DEPRESSION)
NIL: 0%, LOW: 1-25%, FAIR: 26-50%, MODERATE: 51-75% AND HIGH: 76-100%**



265

942

IMD, DELHI

PROBABILITY OF CYCLOGENESIS (FORMATION OF DEPRESSION)
NIL: 0%, LOW: 1-25%, FAIR: 26-50%, MODERATE: 51-75% AND HIGH: 76-100%